

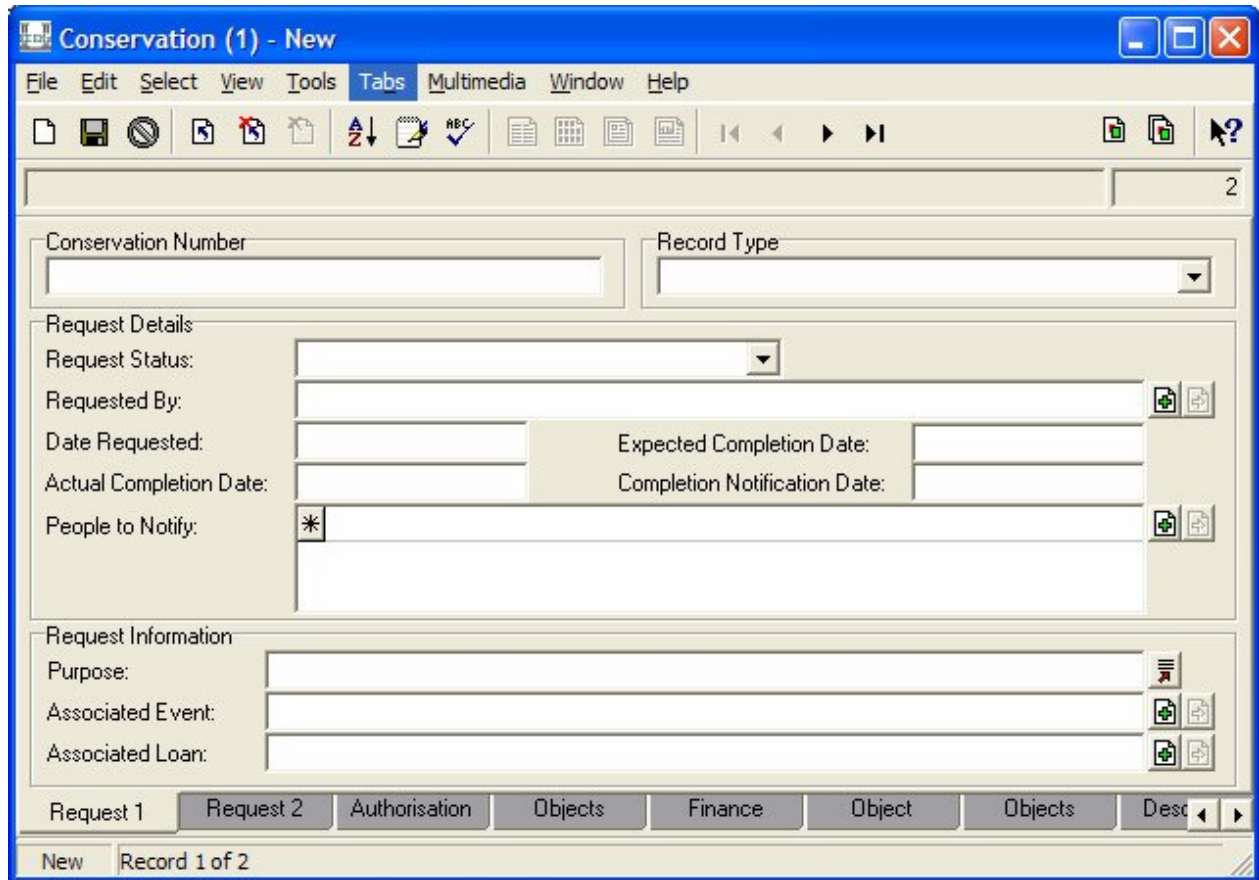
Revised EMu Conservation Module

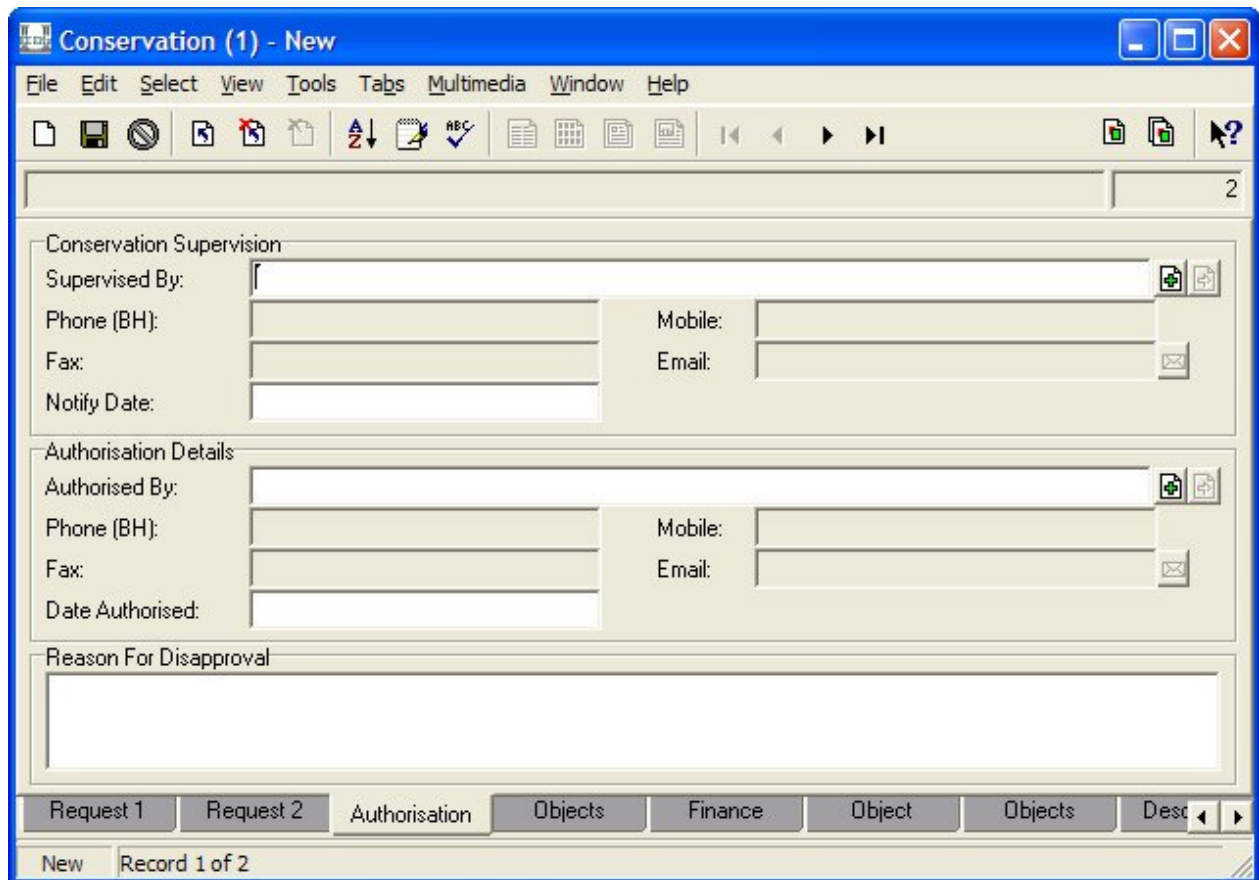
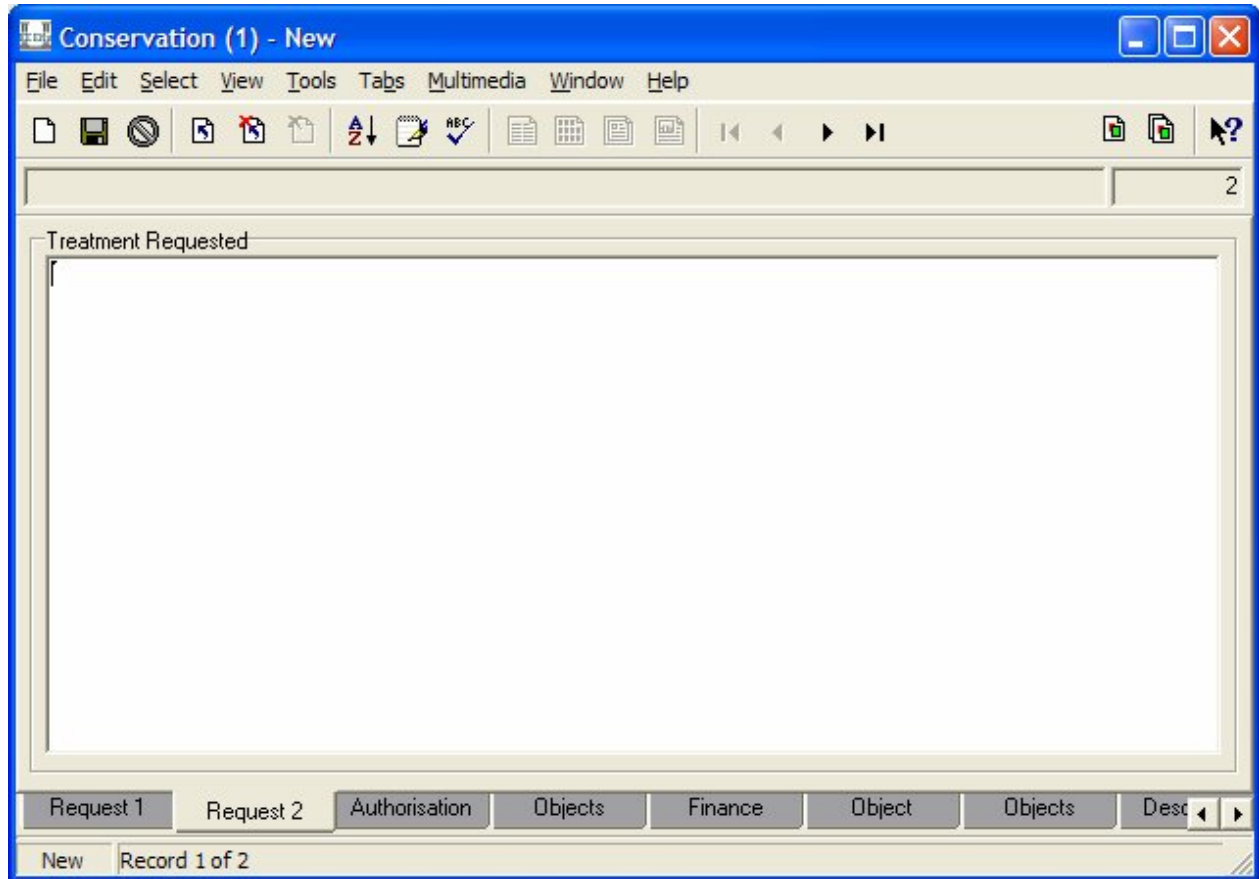
Some general notes:

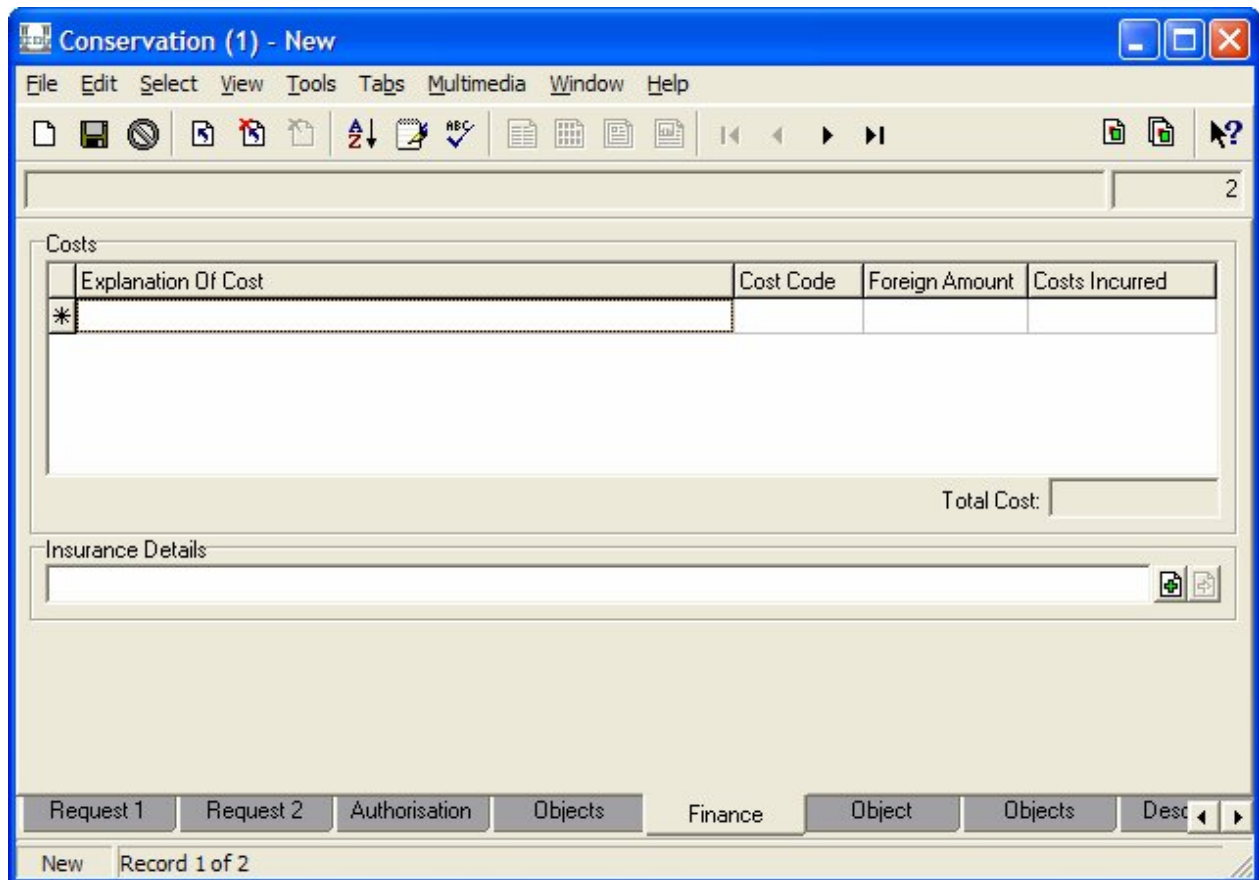
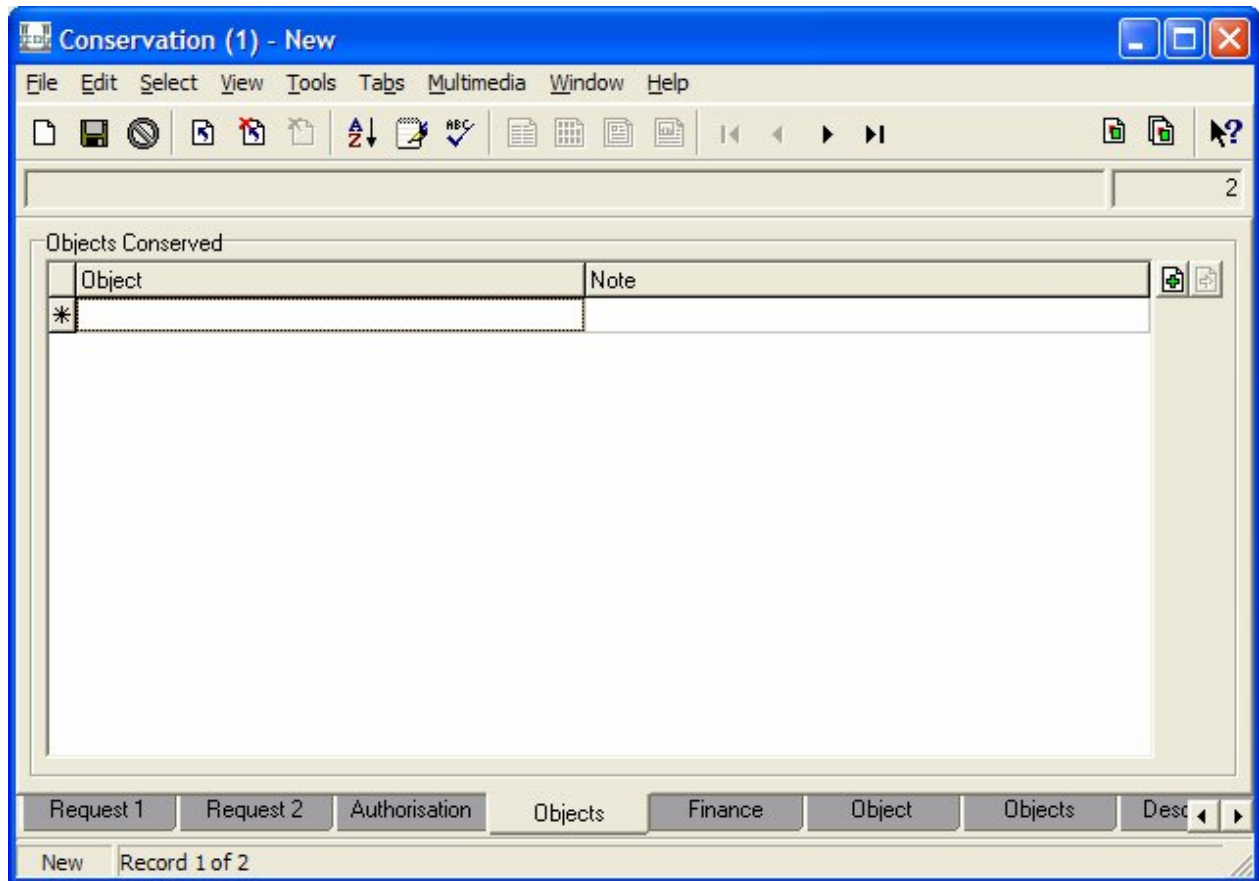
1. KE has to ensure backwards compatibility with the old EMu conservation module. Customers who wish to keep using the current conservation module can continue to do so. At upgrade time, some EMu registry settings will need adjustment to hide the new tabs in the Conservation module.
2. Customers with data in the old EMu Conservation table DO NOT require any data migration to move to the new EMu Conservation module.
3. Not all tabs need to be seen at each customer site. Customers can choose (via the EMu Registry) the tabs appropriate to their requirements. Further the Record Type field is designed for tab switching to display all tabs appropriate to that particular Record Type value.
4. If the default tab order is not the preferred order it can be changed on a Group or User basis via the EMu registry.
5. The screen shots show Field Labels and Tab Labels with English (UK) spelling (which is the default in EMu). Changing the EMu Language setting to English (US) will display labels with US spelling.
6. On the Request 1 and Object/Objects tabs the Conservation Number field is setup to be a Unique value field. However customers can choose to allow duplicates. This field can also be setup to provide automatic number incrementation.
7. Customers who have already sub-classed the old Conservation module will be able to upgrade EMu and continue to use the functionality provided by their original sub-class. Some customers have extensively sub-classed the old Conservation module and it is expected they will continue as is. Some customers have quite minor sub-classing of the old Conservation module and it is anticipated they will move to the new Conservation module (whilst incorporating the functionality of their sub-class). KE will discuss options with each customer.

The first five tabs, Request 1, Request 2, Authorisation, Objects and Finance are the core Conservation tabs from the old EMu Conservation module.

Customers wishing to stay with the functionality of the old EMu Conservation module need only hide the new core Conservation tabs.







The following tabs, Object, Objects, Description, Condition, Proposal, Treatment, Analysis, Accounting, Recommended. and Other Media (which follows after the Multimedia tab) are the new Conservation tabs.

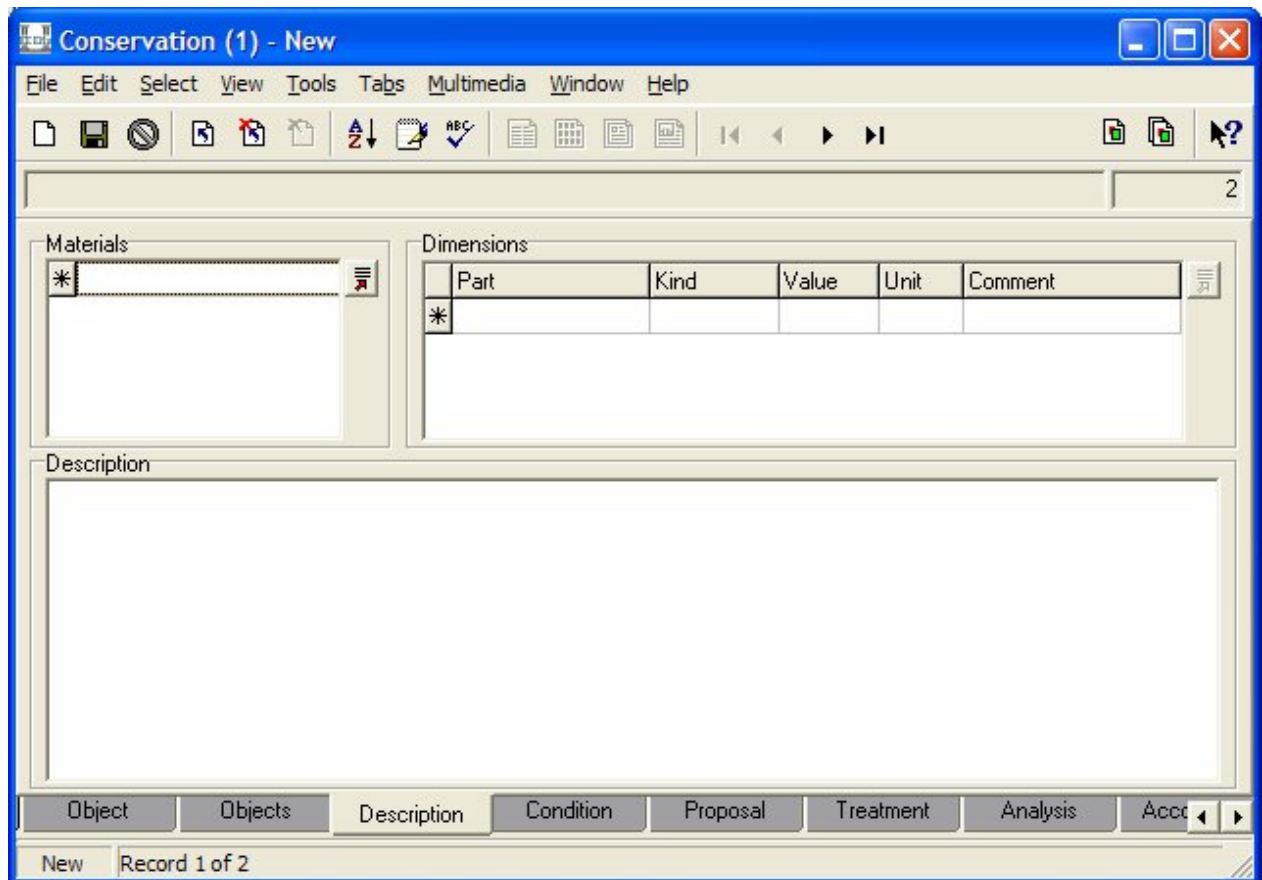
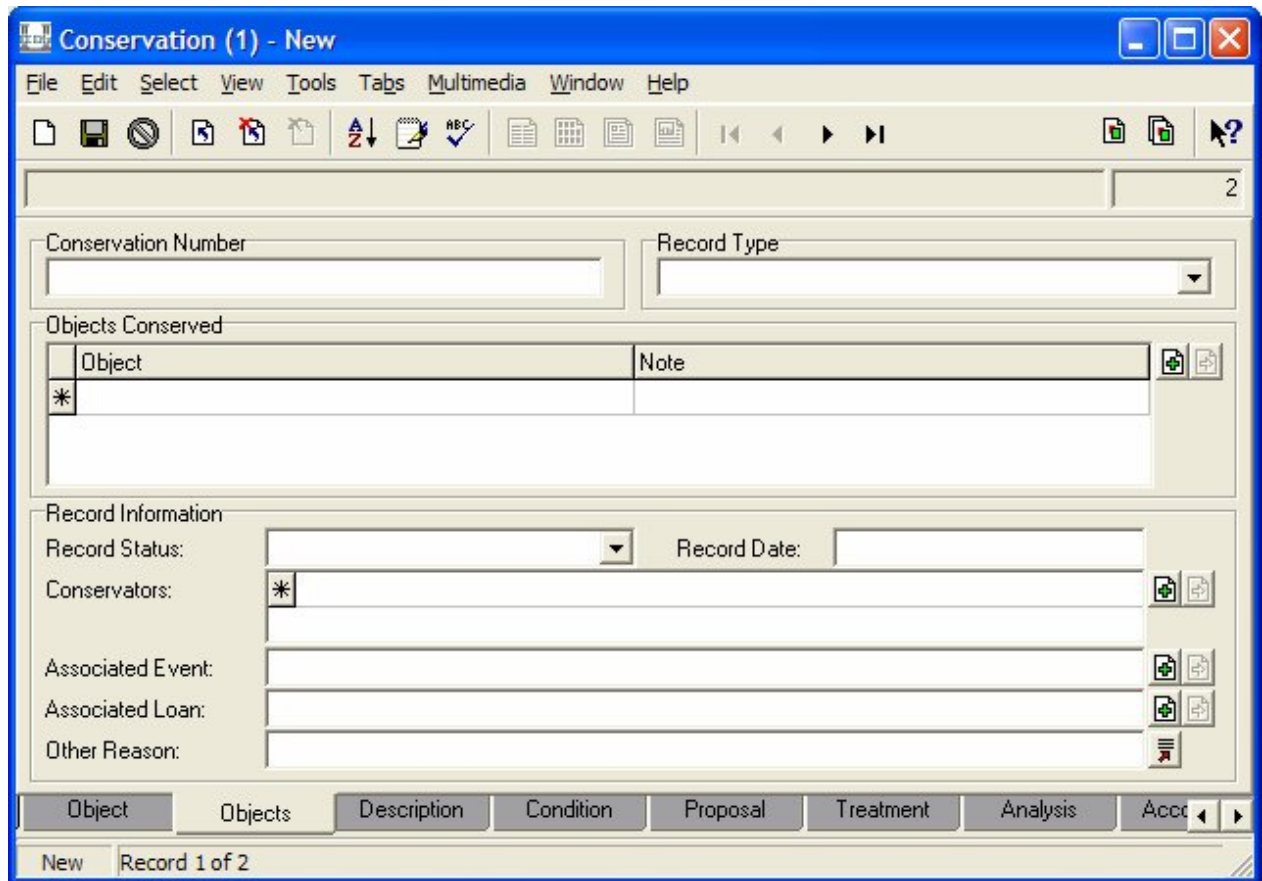
Customers wishing to use the functionality of the new EMu Conservation module need only hide the old core Conservation tabs.

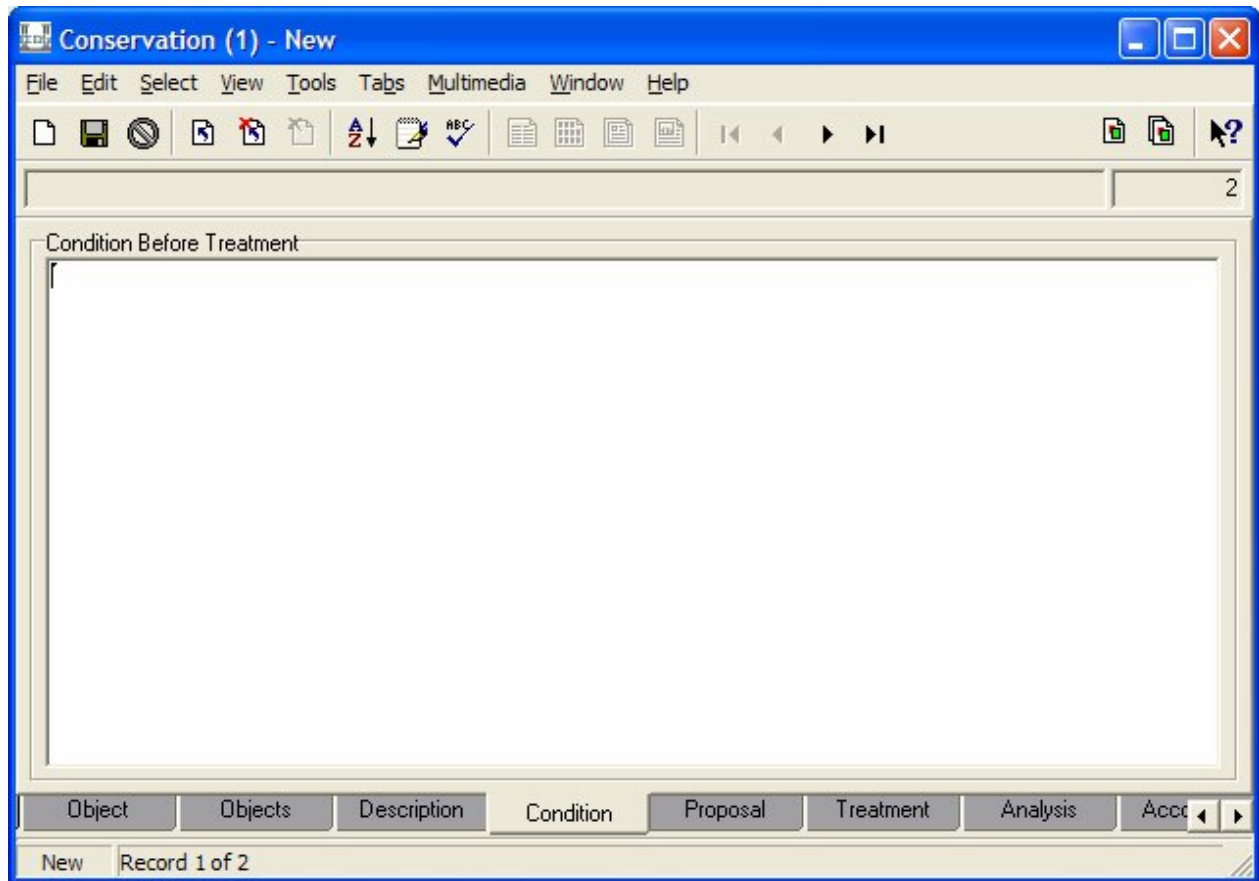
It is intended that customers use either the Object or Objects tab. For one catalogue record per conservation record the Object tab is used. For multiple catalogue records per conservation record the Objects tab is used.

Aside for supporting one catalogue reference or many catalogue references the Object and Objects tabs are the same.

The Record Type field can be used for tab switching to display particular sets of tabs for different types of Conservation records.

The screenshot displays the 'Conservation (1) - New' application window. The interface features a menu bar with 'File', 'Edit', 'Select', 'View', 'Tools', 'Tabs', 'Multimedia', 'Window', and 'Help'. Below the menu is a toolbar with icons for file operations and navigation. The main form area is divided into several sections: 'Conservation Number' and 'Record Type' (a dropdown menu); 'Object Conserved' with sub-fields for 'Object' and 'Note'; 'Record Information' with fields for 'Record Status', 'Record Date', 'Conservators', 'Associated Event', 'Associated Loan', and 'Other Reason'. At the bottom, there is a tabbed interface with tabs for 'Object', 'Objects', 'Description', 'Condition', 'Proposal', 'Treatment', 'Analysis', and 'Accounting'. The status bar at the very bottom indicates 'New' and 'Record 1 of 2'.





The draft specification comprised Internal Proposal and External Proposal tabs. Some customers undertake external consulting work, many do not.

There was much in common between these draft Internal Proposal and External Proposal tabs Also the Accounting section on the External Proposal tab duplicated the information on the Accounting tab.

KE proposes to support the desired functionality with just two tabs – Proposal and Accounting. This simplifies data entry a little but more importantly makes querying/sorting/reporting of Proposal and Accounting details much easier.

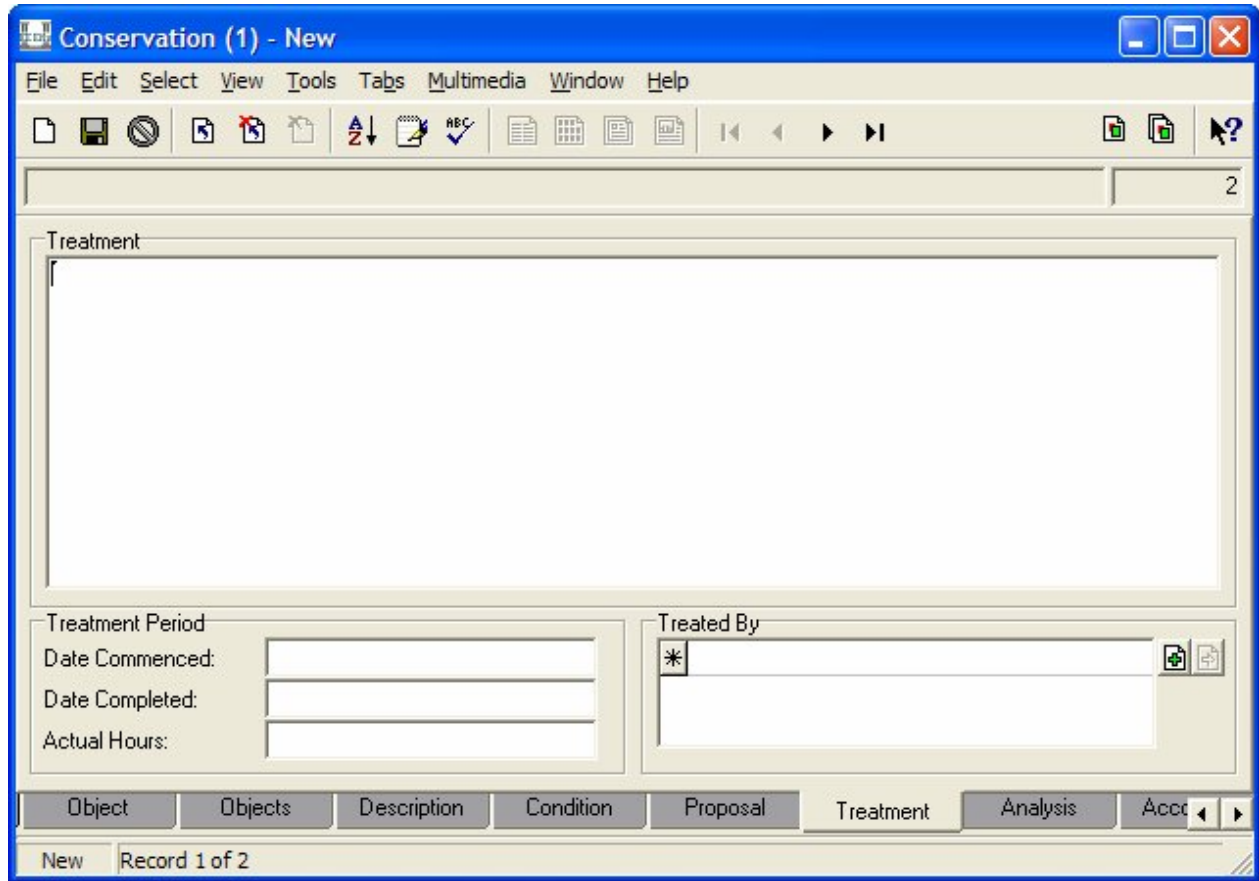
The Proposal tab has a Type field. This can hold the values Internal or External (or indeed any other values desired by the institution).

The draft specification also contained a Context field which has been included in the design. But KE is wondering does the Type field make the Context field redundant?

The screenshot shows a software window titled "Conservation (1) - New" with a menu bar (File, Edit, Select, View, Tools, Tabs, Multimedia, Window, Help) and a toolbar. The main area contains a form with the following sections:

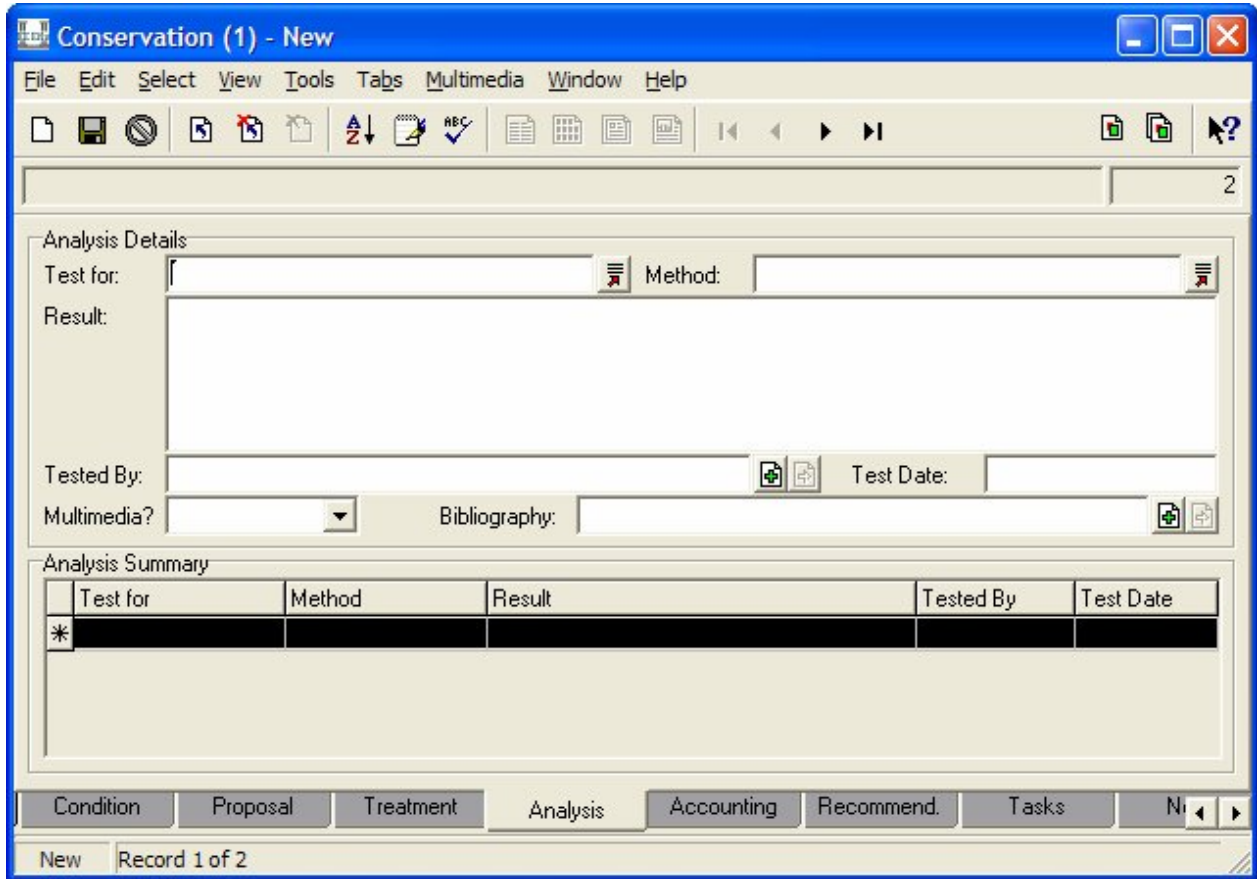
- Proposed Treatment:** Includes a "Type:" dropdown menu, a "Context:" text field, a large "Proposal:" text area, a "Proposal By:" field with an asterisk and a selection icon, "Proposal Date:" and "Estimated Hours:" fields.
- Authorisation Details:** Includes a "By:" field with a selection icon, an "Approved?" dropdown menu, and a "Date:" field.
- Authorisation Summary:** A table with columns: By, Approved?, Comment, Date. The first row contains an asterisk in the "By" column.

At the bottom, there is a tabbed interface with tabs for "Object", "Objects", "Description", "Condition", "Proposal", "Treatment", "Analysis", and "Acct". The "Proposal" tab is currently selected. The status bar at the bottom left shows "New" and "Record 1 of 2".



The draft specification had a Multimedia reference on the Analysis tab. Such a reference is inconsistent with the rest of EMu and KE will not place it on a core tab.

A simple Multimedia text drop down has been added to allow flagging of each row of the Analysis grid as being related to a multimedia attachment (on the standard Multimedia tab). Each customer can define the flags appropriate to their needs.



Conservation (1) - New

File Edit Select View Tools Tabs Multimedia Window Help

2

Labour and Material Costs

Task	Conservator	Hours	Rate	Sub-Total
*				

Total Labour Cost: _____

Material	Manufacturer	Supplier	Quantity	Unit	Unit Cost	Sub-Total
*						

Total Material Cost: _____

Total Cost: _____

Condition Proposal Treatment Analysis Accounting Recommend. Tasks

New Record 1 of 2

Conservation (1) - New

File Edit Select View Tools Tabs Multimedia Window Help

2

Environmental Limits

Handling Requirements

Mounting Requirements

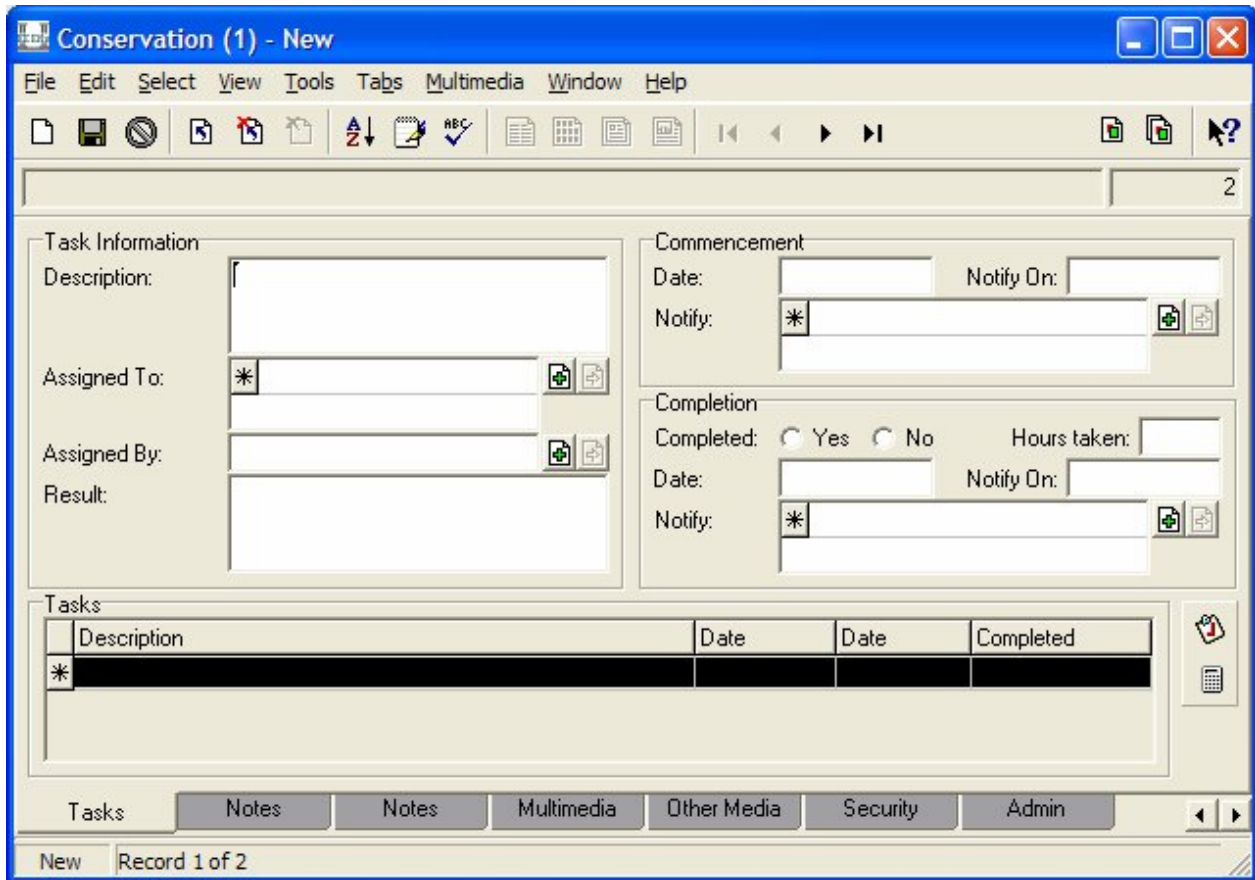
Storage Requirements

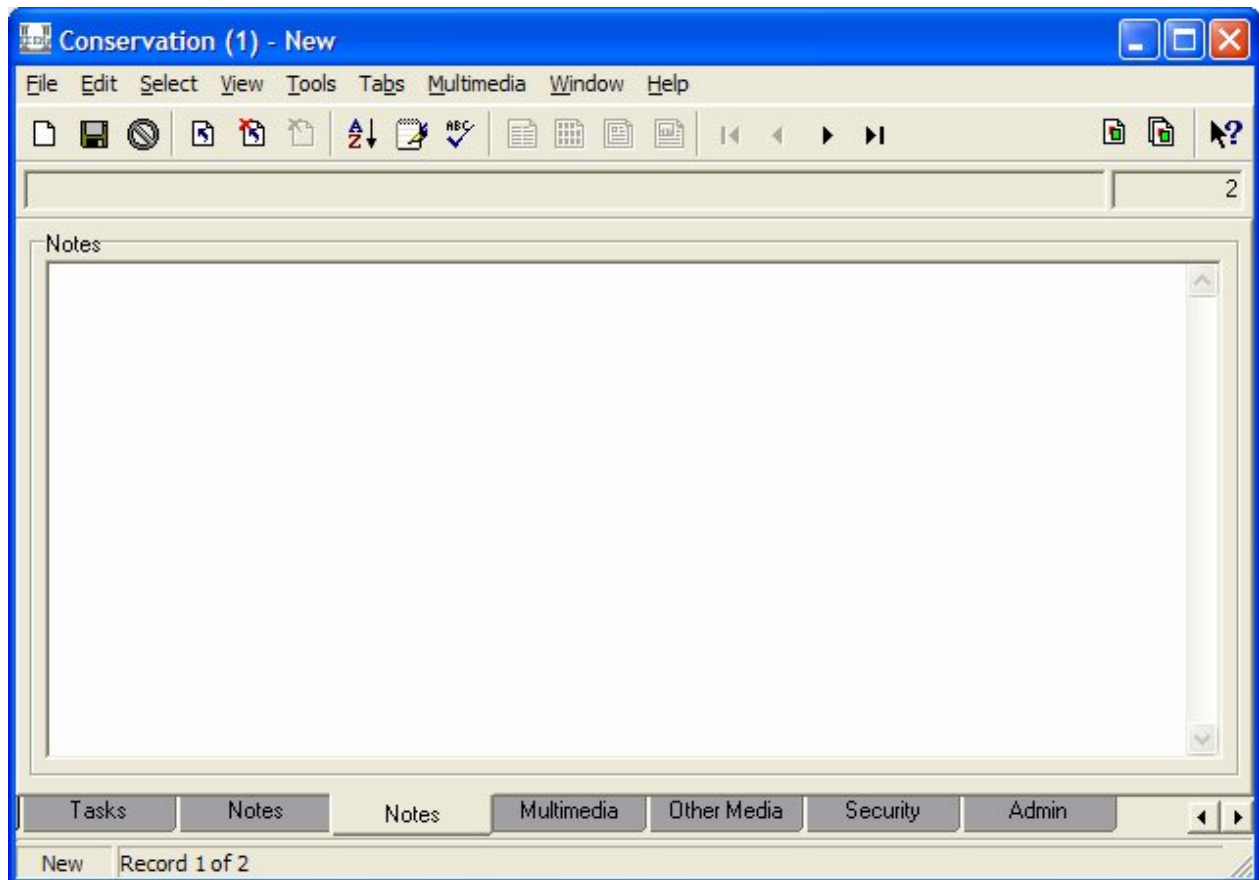
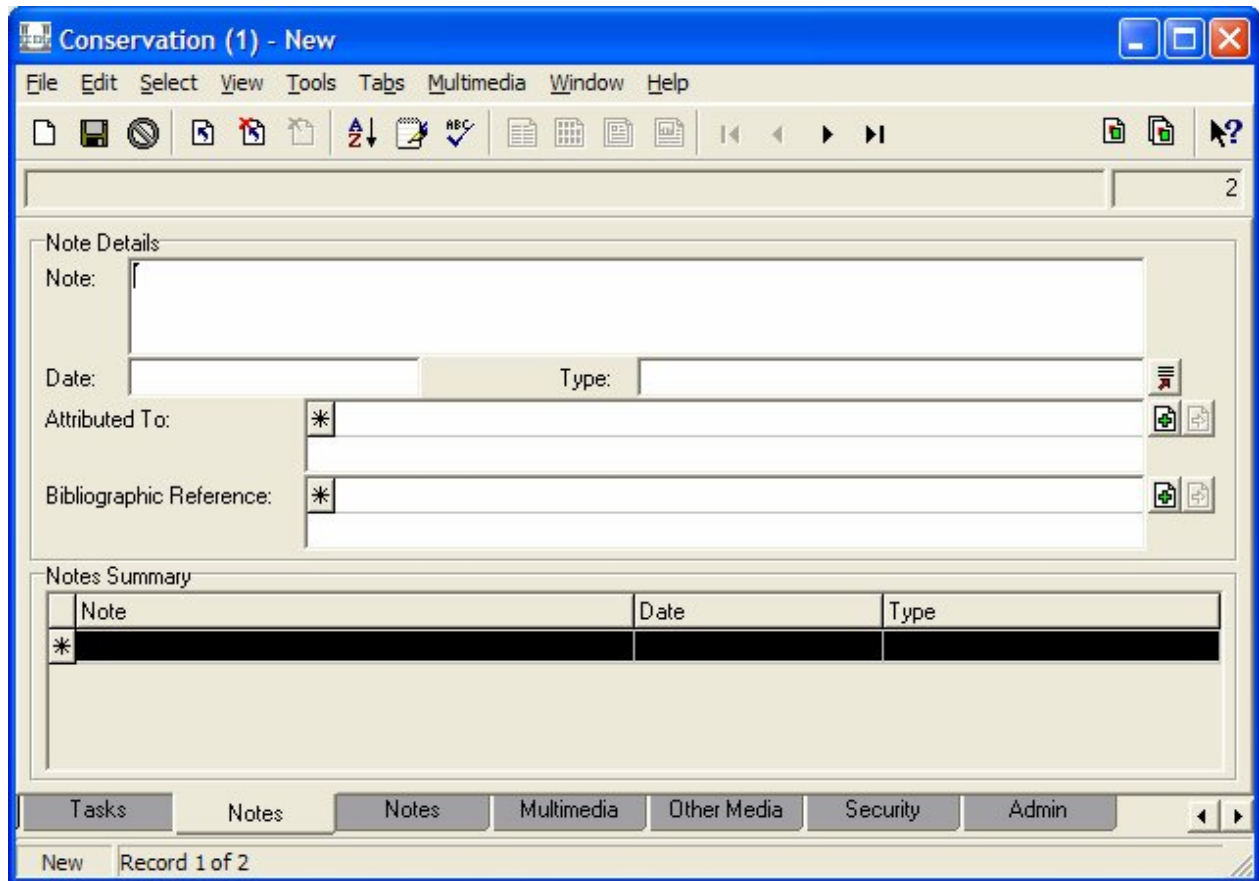
Condition Proposal Treatment Analysis Accounting Recommend. Tasks

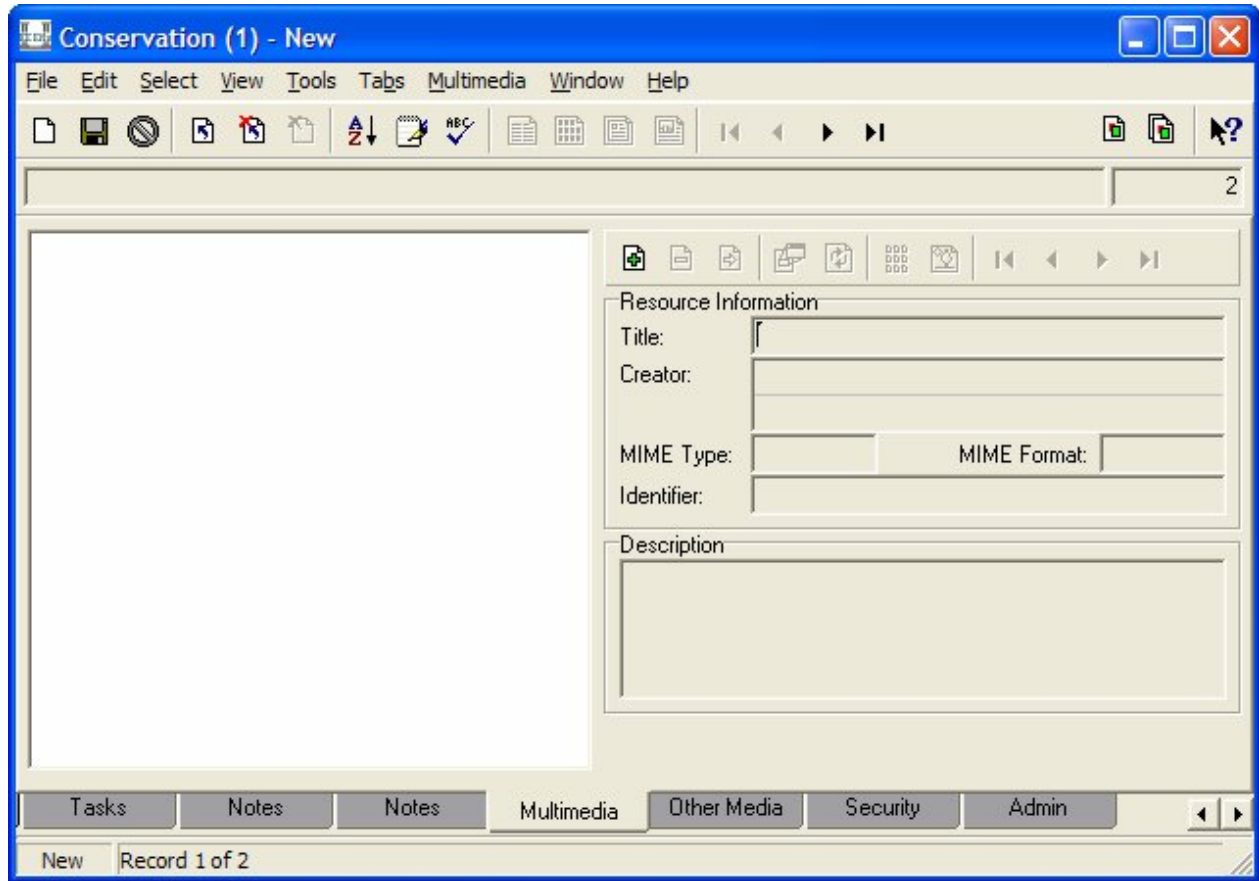
New Record 1 of 2

Tasks, Multimedia, Security and Admin are the standard EMu tabs.

Two Notes tabs are provided and customers may choose which one to use. A new attributed Notes tab allows more detail to be attached to individual notes. The old Notes tab is supported for backwards compatibility with the old EMu Conservation module.







By default the positioning of the Other Media tab is next to the standard Multimedia tab. KE believes this is where it should go. Customers can adjust this default tab order via the EMu registry.

